



IVC FILTER INSERTION DISCHARGE EDUCATION

Information:

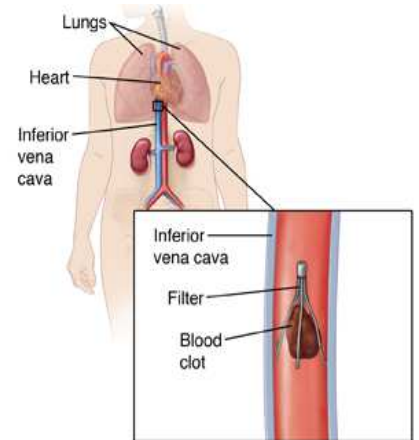
A vena cave filter implantation is a procedure to place a device in the inferior vena cava via image guidance. The inferior vena cava is the large vein in the abdomen that returns blood from the lower half of the body to the heart. The device that is placed is a filter that traps blood clots in the lower body, to help prevent the clots from traveling to the lungs.

What should I expect after the IVC Filter procedure?

- There may be some soreness around the insertion site.
- You may return to work after 24 hours unless your primary doctor instructs you otherwise.
- You do not have any diet restrictions due to this procedure.

If you are taking medications:

- You can Continue your Coumadin and all previously prescribed medications **with the exception of Pradaxa, Xarelto, Eliquis or Savaysa which can be resumed after 24 hours.**
- If you are taking pain medications:
 - Take as directed
 - Do not drink alcohol while taking narcotic pain medication
 - Do not drive
 - If you are constipated, drink more fluids and eat more fiber. You can also use an over-the-counter stool softener.



Bathing & Wound Care:

- You may shower after 24 hours; but do not sit in a bath or submerge yourself in water for 3 days (bath tub, hot tub, swimming pool, river or any other body of water).
- If you have a dressing over your insertion site, change it as directed. Replace the dressing if it becomes wet or dirty. In most cases the dressing can be removed after 72 hours.
- Apply ice to affected area as needed for 10 minutes each hour.
- If the insertion site(s) become red, tender, swollen, or starts to drain, contact us.
- Avoid any heavy lifting or strenuous activity for 24 hours.

Follow-up visit information:

After discharge call your primary doctor for a follow-up appointment if one has not been made. Follow up with Interventional Radiology may be necessary for retrieval of IVC filter device once you have been fully anticoagulated or if your primary doctor deems it fit that the filter be removed. Most IVC filters can be removed after 3 months.

Occasionally, a situation will require prompt attention and an emergency room visit is necessary:

- Active bleeding that does not stop after applying pressure to the area for 15 minutes.
- Increasing redness, swelling or drainage from the insertion site.
- Increasing pain not relieved by medication
- Bleeding or drainage from the incision site that is saturating the dressing.
- Any shaking, chills and/or a temperature over 100.3°F.
- New, sudden difficulty with breathing.



- Drop in blood pressure, and/or light-headed feeling.
- Sudden chest pain, shortness of breath, or fainting.

If you received Conscious Sedation (IV sedation) and are discharged the same-day:

- You must have someone drive you home when you leave the hospital.
- For 24 hours after your procedure, do not do anything where you need to be mentally alert. This includes driving, making important decisions, operating machinery, signing important papers, etc.
- Eat light for the first 24 hours, and then start eating more as you are able. Drink plenty of fluids.

For any questions please contact Oregon Interventional Radiology clinic at 541-618-5801

In all emergency situations call 911