

Ultrasound Liver Measurements Guideline

The purpose of this guideline is to establish consistent reporting measurements of the liver and related structures. A copy of this will be distributed to all sites.

Scope

This guideline applies to all ultrasound exams that include measuring the liver and related structures.

Guideline

- Liver CC measurement is to be performed in the right midclavicular line and measured on the sagittal images from the highest part seen along the diaphragm up to the distal tip of the right lobe. (See diagram provided)
- Upper limit of normal is 18.0 cm unless the patient has a normal variant Riedel's lobe.
- When measuring the Common Bile Duct (CBD), include one digit after the decimal point (e.g. **5.5** mm)
- When measuring the Gallbladder wall thickness, include one digit after the decimal point (e.g. **2.2** mm)

Factors Affecting Liver Size

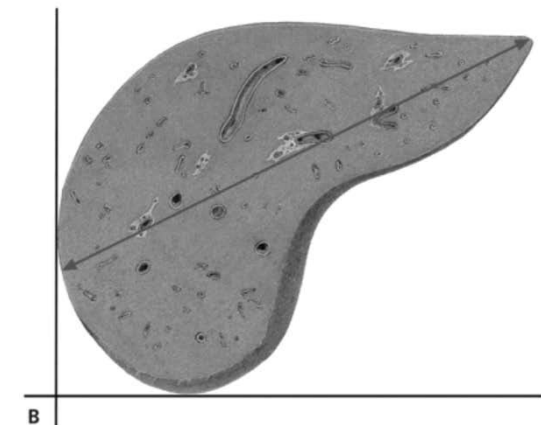
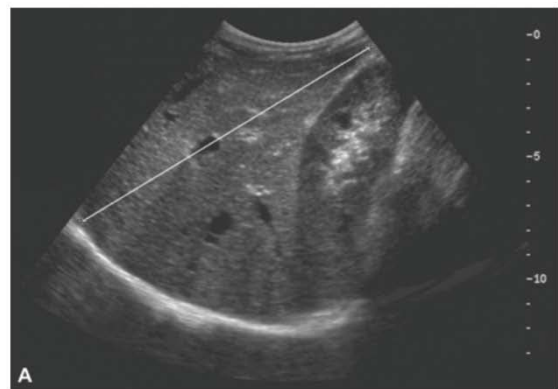


Figure 1.

Measurement of liver size in the largest craniocaudal diameter in the MCL during inspiration in a supine subject. **A**, Sonographic measurement. **B**, Diagrammatic representation of measurement.