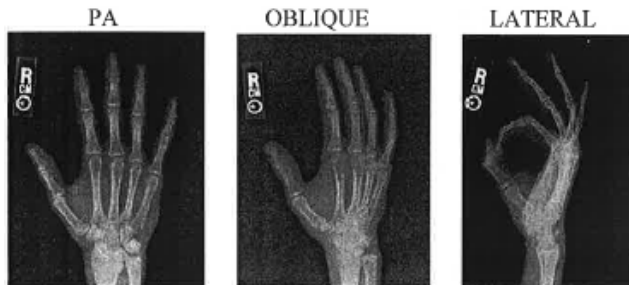


Hand X-ray Guideline

Routine: 3 views

- PA
- PA OBLIQUE
- LATERAL - Separate fingers to prevent overlapping (Fan lateral)



Foreign Body: 2 views

- PA
- LATERAL
- Mark entrance site or region of interest with BB skin marker or radiopaque arrow/marker on the image. Please document that these markers are being utilized. Please do not place PACS markers on the image.

Bilateral Hands/Wrists:

2 total views including both hands and wrists for evaluation of arthritis

- PA view both hands and wrists (position hands as close together as possible to minimize the necessary field of view)
- Oblique AP view (Ball catcher's view) with same bilateral field of view.
- LATERAL bilateral view can also be performed if ordered as 3 views.