

## CT Soft Tissue Neck Guideline

**Indications:** Mass, Dysphagia, Fever with sore throat

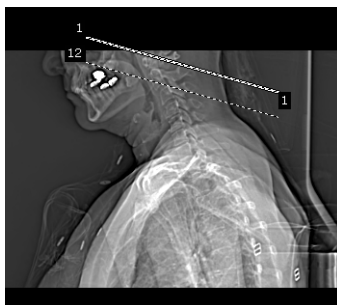
**Oral Contrast:** None

**IV Contrast:** If indicated; Yes (See [MRG Contrast Media Administration Policy](#))

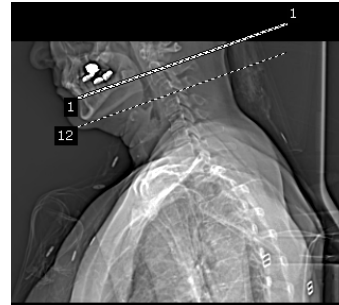
<b>Positioning</b>	<b>Supine, head first</b>
<b>FOV</b>	<b>Patient Size</b>
<b>Axial Reconstruction: Thickness/ Interval/ Algorithm</b>	<b>(1) 2mm/2mm/Soft (2) 2mm/2mm/Sharp</b>
<b>Start Location</b>	<b>Internal Auditory Canal</b>
<b>End Location</b>	<b><u>Sternoclavicular Joints</u></b>  <b>For the following indications:</b> <b>Horner's syndrome - <u>End Location:</u> Carina</b> <b>Vocal cord paralysis - <u>End Location:</u> Carina</b>
<b>Gantry Angle</b>	<b>None</b>
<b>Reformations: Thickness/ Interval/ Algorithm</b>	<b>(1) Coronal 2mm/2mm/Soft (2) Sagittal 2mm/2mm/Soft</b>
<b>Phase of Respiration</b>	<b>Inspiration</b>

For patients with a large amount of dental hardware, please perform the following additional scans.

1) Angle above the dental hardware:



2) Angle below the dental hardware:



These scans should include approximately 10-15 images and be done immediately following the initial scan (entire neck listed above) so that contrast is still in the area of interest.

If unable to angle gantry, patient can lift chin up to move dental hardware out of the field of view.

This scan should include approximately 10-15 images and be done immediately following the initial scan (entire neck listed above) so that contrast is still in the area of interest.